



PRIMARY SCHOOL

AT A GLANCE

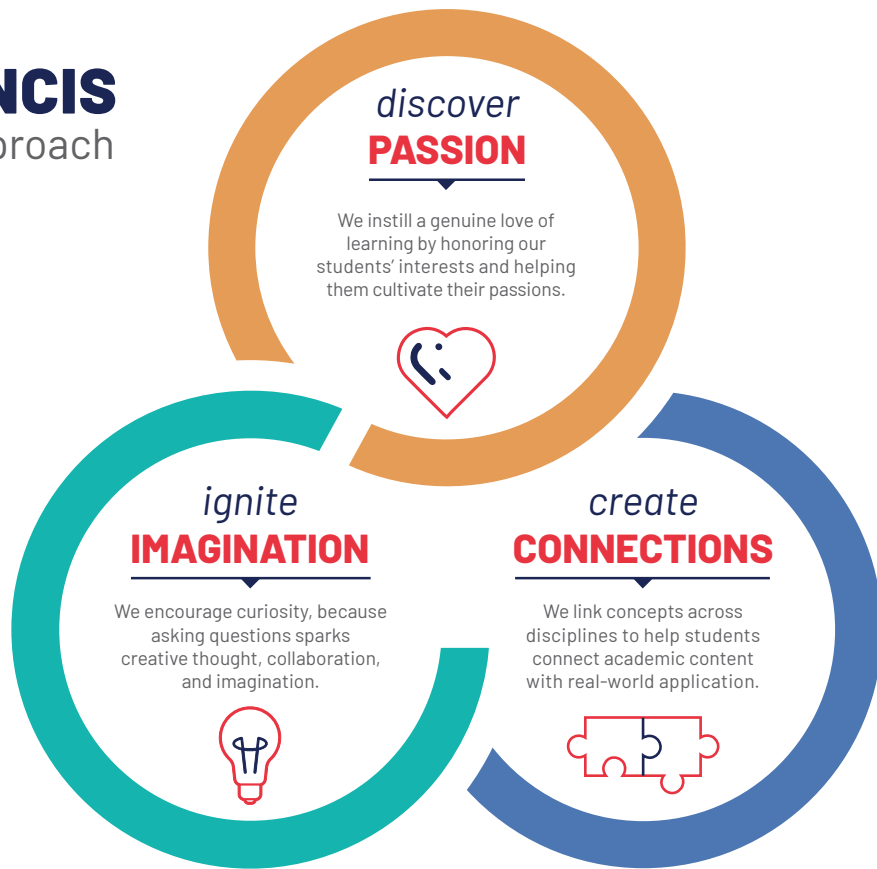


St. Francis Episcopal Primary School is a Reggio-inspired program where children's natural curiosity, creativity, and developing independence are honored and supported. Through meaningful project work, exploration, and opportunities to build valuable relationships, students experience joyful learning in an environment that celebrates childhood.

2022-23 CORE CURRICULUM HIGHLIGHTS

THE ST. FRANCIS

P.I.C. Approach



REGGIO-INSPIRED APPROACH

Research has identified specific skills that our children will need to live and work successfully in our rapidly changing world. These skills include the confidence to ask questions, think critically, solve problems, and work with others. Our instructional approach, inspired by the early education programs in Reggio Emilia, Italy, teaches these skills and more through child-initiated classroom projects. Although the Reggio approach is not new, the depth of inquiry and shared responsibility for learning between the child, teacher, and peers make this approach relevant today.

PRE-PRIMARY

Our Pre-Primary program gives children their first introduction to a school setting, as well as to St. Francis. With a focus on social and emotional development, young children learn how to be part of a group, share their thoughts and feelings, and begin working on projects that stem from their ideas and interests.

PRIMARY I

Growing independence and responsibility mark students' transition into Primary I. Children become members of a larger community of learners with abundant opportunities to stretch their thinking and continue to grow socially and emotionally. Students explore and use new materials creatively through expanded time in the studio, project work, and outdoor activity.

PRIMARY II

Field trips, leadership opportunities, and a focus on the St. Francis Way enhance the Primary II year. Students also continue to develop problem-solving skills through collaborative project work. Time-honored curriculum components, such as Bridges Mathematics and Rice Early Literacy, and expanded literacy experiences help students build confidence in their final year of Primary School.

2022–23 CORE CURRICULUM HIGHLIGHTS

St. Francis's developmentally appropriate pre-K curriculum goes beyond state and national standards for independent preschools, offering balanced literacy practices, Reggio-inspired, project-based learning, special programs, and a model spiritual-development program.

PRIMARY SCHOOL



RICE EARLY LITERACY

Our Primary School partners with Rice University to offer a literacy curriculum that emphasizes reading, writing, culture, child development, and research. Students learn that their thoughts, ideas, and words are valuable and can be captured as print, dramatized, and read again and again. All learning occurs through meaningful, authentic activities, which help develop each child's phonological awareness and alphabetic understanding. Classroom literacy experiences include:

- Read-alouds, poems, songs, and fingerplays
- Storytelling, story creation, and story dramatizations
- Story baskets
- Dramatic play
- Authentic writing opportunities
- News of the day



EMERGENT CURRICULUM

Our emergent curriculum builds upon the curiosity of the children. Projects are created and become in-depth studies of concepts, ideas, and interests. Students experience learning through play and interaction. While participating in projects and using materials, children learn through exploration of the learning environment.



ACADEMICS AND ENRICHMENT

Academic skills are taught through a variety of topics. In Primary School, children learn early literacy and math skills, as well as science and social studies concepts. In addition, we have a strong enrichment program that includes motor development, Spanish, drama, music, and visits to the Primary School library.



ASSESSMENT

Our program is highly individualized to provide for the development of each child at his or her own pace. Primary students are assessed using teacher observations, benchmarks, and portfolios.



PARENT CONFERENCES

Parent-teacher conferences are held multiple times each year. Conferences can occur at other times throughout the year at the teacher's or parent's request. Assessments and portfolios are shared during the fall and spring conferences. Parents also receive a detailed narrative report about their child's progress.



PARENT INVOLVEMENT

Parents have many opportunities to become involved, such as serving as a Homeroom Parent, volunteering for class activities, visiting as a guest reader or through events with the St. Francis Parents Organization. Special days on campus include Mothers and Others, Grandparents and Grandfriends Day, and Fathers and Friends. In addition, parents are always invited to attend chapel with their children.



LICENSING (PRE-PRIMARY)

St. Francis's Pre-Primary program is licensed through the Texas Department of Family and Protective Services. The school adheres to Child Care Licensing Minimum Standards. A copy of these standards is available in the foyer of the Pre-Primary building and online at www.dfps.state.tx.us/Child_Care/Child_Care_Standards_and_Regulations.

CONTACT INFORMATION

KENYETTA WYNN, EdD

Head of Primary School
Diversity, Equity, and Inclusion Coordinator
713.458.6115
KWynn@StFrancisHouston.org

RYAN KOCHER, MEd

Assistant Head of Primary School
713.458.6322
RKocher@StFrancisHouston.org

JENNIFER RASA

Primary School Office Manager
713.458.6166
JRasa@StFrancisHouston.org

MARGARET YERKOVICH

Assistant Head of Admissions
713.458.6152
MYerkovich@StFrancisHouston.org

**PINEY POINT CAMPUS + MAILING**

335 Piney Point Road
Houston, TX 77024

COUPER CAMPUS

2300 South Piney Point Road
Houston, TX 77063

www.StFrancisHouston.org

P: 713.458.6100

F: 713.782.4720

